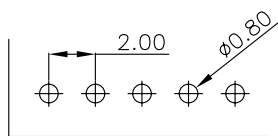
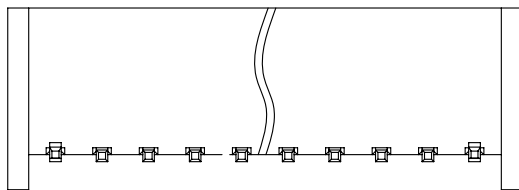
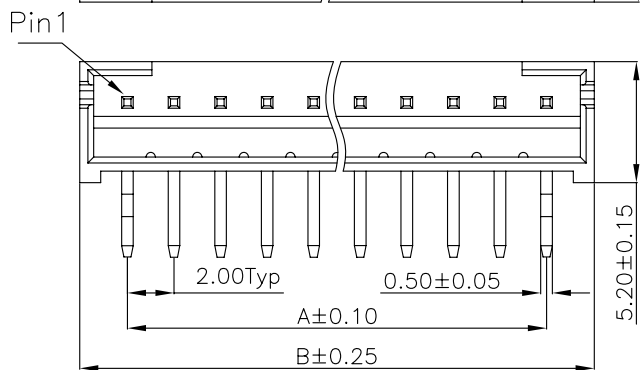
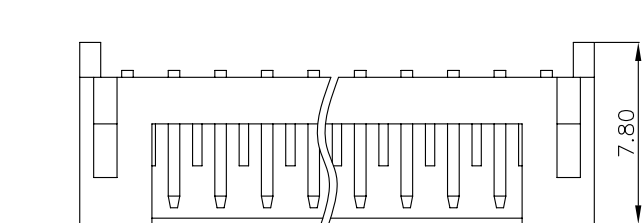
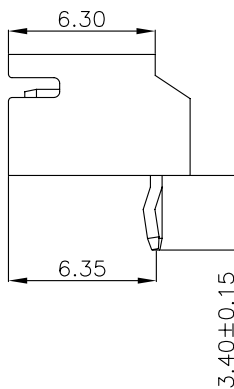
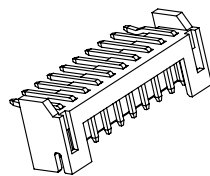


ROHS G103



RECOMMENDED PCB LAYOUT
(TOLERANCE:±0.10)



1.ELECTRICAL SPECIFICATIONS:

- 1.1 Rated current and voltage(额定电流):
2.0A 100V AC(r.m.s)
- 1.2 Dielectric Withstanding Voltage(耐电压) :
800V AC for one minute
- 1.3 Contact Resistance(接触电阻) :
20mΩ max
- 1.4 Insulation Resistance(绝缘电阻) :
1000MΩ min
- 1.5 Operating Temperature(工作温度) :
-25°C ~ 85°C

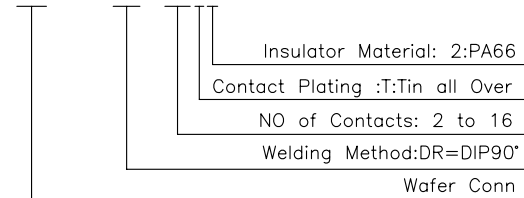
2.MATERIAL SPECIFICATION:

- 2.1 Insulator Material(绝缘体材质):
PA66
- 2.2 Contact Material(端子材质):
Brass
- 2.3 Applicable wire:30AWG TO 24AWG

▲ Non-tooled parts
No.of positions DIM list:

CONTACTS	DIMENSIONS	
	A	B
2	2.00	6.10
3	4.00	8.10
4	6.00	10.10
5	8.00	12.10
6	10.00	14.10
7	12.00	16.10
8	14.00	18.10
9	16.00	20.10
10	18.00	22.10
11	20.00	24.10
12	22.00	26.10
13	24.00	28.10
14	26.00	30.10
15	28.00	32.10
16	30.00	34.10

PART NO. LEGEND:
WB2012DR-XXT2



E			
D			
C			
B			
A			
NO.	DATE	DESCRIPTION	APPROVAL

DRAWING:
Hu yatao

CHECKED:
Tony

APPROVAL:
Yang jie

GENERAL TOLERANCE
.X:=±0.30 .X*:=±2°
.XX:=±0.20 .XX*:=±1°
.XXX:=±0.10 .XXX*:=±0.5°

UNIT: MM PROJECTION:

SCALE: N/A

SHEET: 1/1



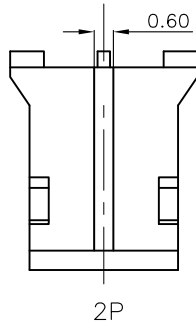
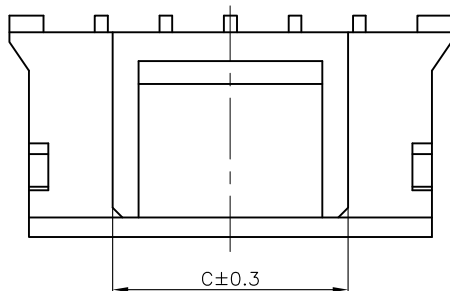
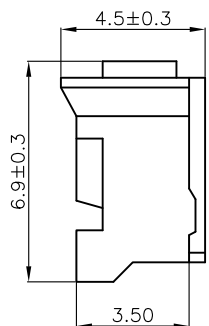
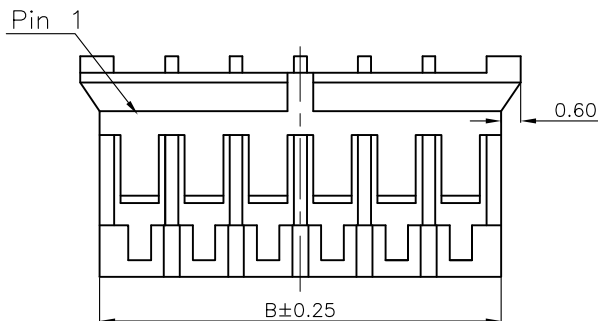
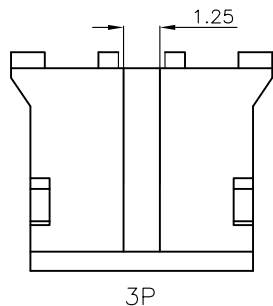
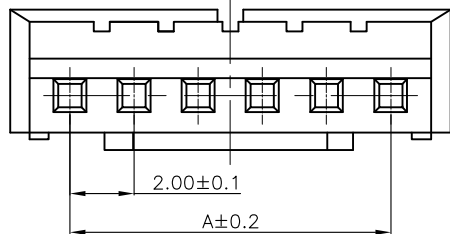
CHIN-BAN
electronics (H.K.) co., ltd

DESCRIPTION:
2.00mm Pitch DIP90° K Series

PART NO: WB2012DR-XXT2 REV: 1.0

CUSTOMER NO: SIZE: A4

ROHS G103



1.ELECTRICAL SPECIFICATIONS:

- 1.1 Rated current and voltage(额定电流):
2.0A 250V AC(r.m.s)
- 1.2 Dielectric Withstanding Voltage(耐电压) :
800V AC for one minute
- 1.3 Contact Resistance(接触电阻) :
20mΩ max
- 1.4 Insulation Resistance(绝缘电阻) :
1000MΩ min
- 1.5 Operating Temperature(工作温度) :
-25℃ ~ 85℃

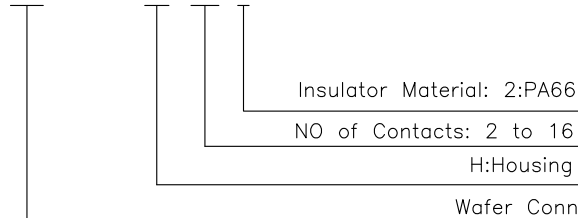
2.MATERIAL SPECIFICATION:

- 2.1 Insulator Material(绝缘体材质):
PA66,UL94V-0(nature)
- 2.2 Applicable wire:28AWG-22AWG

▲ Non-tooled parts
No.of positions DIM list:

CONTACTS	DIMENSIONS		
	A	B	C
2	2.00	4.60	0.60
3	4.00	6.60	1.30
4	6.00	8.60	3.30
5	8.00	10.60	5.30
6	10.00	12.60	7.30
7	12.00	14.60	9.30
8	14.00	16.60	11.30
9	16.00	18.60	15.30
10	18.00	20.60	17.30
11	20.00	22.60	19.30
12	22.00	24.60	21.30
13	24.00	26.60	23.30
14	26.00	28.60	25.30
15	28.00	28.60	27.30
16	30.00	30.60	29.30

PART NO. LEGEND:
WB2002DSH-XXP2



DRAWING:
Hu yatao
CHECKED:
Tony
APPROVAL:
Yang jie

GENERAL TOLERANCE
.X:=±0.30 .X*:=±2°
.XX:=±0.25 .XX*:=±1°
.XXX:=±0.15 .XXX*:=±0.5°
UNIT: MM PROJECTION:
SCALE: N/A
SHEET: 1/1

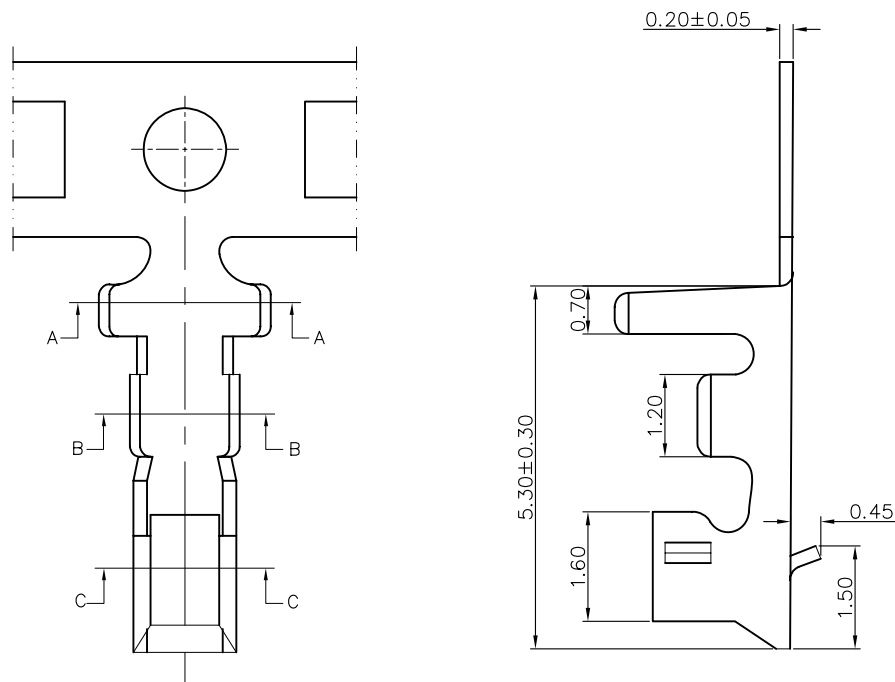


CHIN-BAN
electronics (H.K.) co., ltd

DESCRIPTION:
2.00mm Pitch Housing Single Row
PART NO: WB2002DSH-XXP2 REV: 1.0
CUSTOMER NO: SIZE: A4

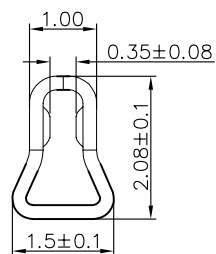
E			
D			
C			
B			
A			
NO.	DATE	DESCRIPTION	APPROVAL

ROHS G103

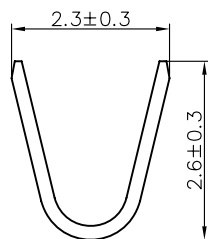


1.ELECTRICAL SPECIFICATIONS:

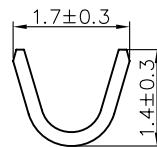
- 1.1 Rated current and voltage(额定电流):
2.0A 250V AC(r.m.s)
- 1.2 Dielectric Withstanding Voltage(耐电压) :
800V AC for one minute
- 1.3 Contact Resistance(接触电阻) :
20mΩ max
- 1.4 Insulation Resistance(绝缘电阻) :
1000MΩ min
- 1.5 Operating Temperature(工作温度) :
-25℃ ~ 85℃
- 1.6 Material:
Phosphor Bronze (UL94V-0); Tin
- 1.7 Applicable wire:28AWG-22AWG



SECTION C-C
SCALE 1 1

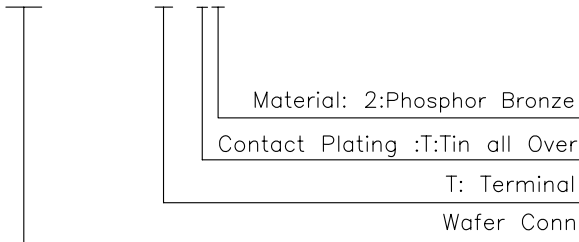


SECTION A-A
SCALE 1 1



SECTION B-B
SCALE 1 1

PART NO. LEGEND:
WB2002DST-T2



E				DRAWING: Hu yatao	GENERAL TOLERANCE .X: =±0.30 .X*: =±2° .XX: =±0.20 .XX*: =±1° .XXX: =±0.10 .XXX*: =±0.5°		
D				CHECKED: Tony	UNIT: MM	PROJECTION:	
C				APPROVAL: Yang jie	SCALE: N/A		DESCRIPTION: 2.00mm Pitch Terminal
B					SHEET: 1/1		PART NO: WB2002DST-T2
A						CUSTOMER NO:	SIZE: A4
NO.	DATE	DESCRIPTION	APPROVAL				