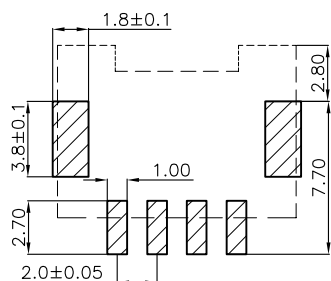
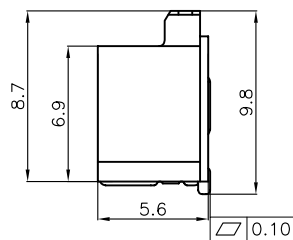
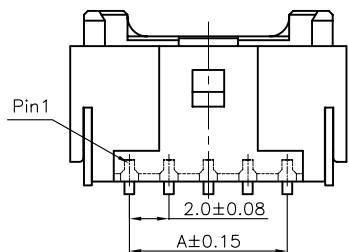
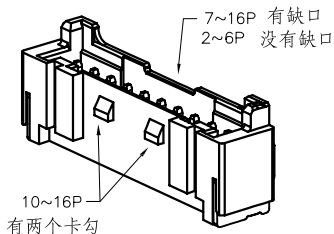
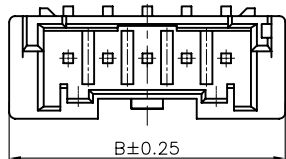
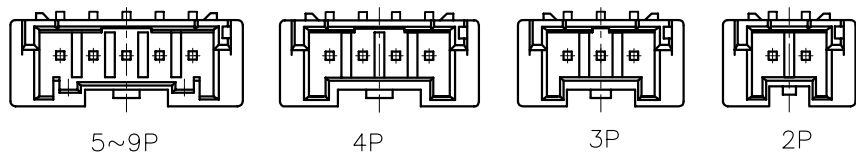


ROHS G103



RECOMMENDED PCB LAYOUT (TOLERANCE:±0.05)



1.ELECTRICAL SPECIFICATIONS:

- 1.1 Rated current and voltage(额定电流):
2.0A 100V AC(r.m.s)
- 1.2 Dielectric Withstanding Voltage(耐电压) :
800V AC for one minute
- 1.3 Contact Resistance(接触电阻) :
20mΩ max
- 1.4 Insulation Resistance(绝缘电阻) :
1000MΩ min
- 1.5 Operating Temperature(工作温度) :
-25°C ~ 85°C

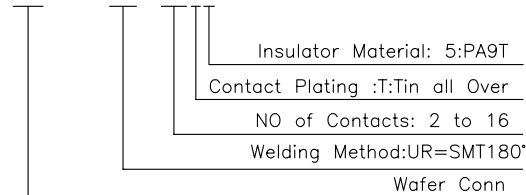
2.MATERIAL SPECIFICATION:

- 2.1 Insulator Material(绝缘体材质):
PA9T,UL94V-0(nature)
- 2.2 Contact Material(端子材质):
Brass,Tin Plated
- 2.3 Solder Tab Material(焊片脚材质):
Brass,Tin Plated
- 2.4 Applicable wire:28AWG TO 22AWG

▲ Non-tooled parts
No.of positions DIM list:

CONTACTS	DIMENSIONS	
	A	B
2	2.00	8.00
3	4.00	10.00
4	6.00	12.00
5	8.00	14.00
6	10.00	16.00
7	12.00	18.00
8	14.00	20.00
9	16.00	22.00
▲ 10	18.00	24.00
▲ 11	20.00	26.00
▲ 12	22.00	28.00
▲ 13	24.00	30.00
▲ 14	26.00	32.00
▲ 15	28.00	34.00
▲ 16	30.00	36.00

PART NO. LEGEND:
WB2011UR-XXT5



DRAWING:
Hu yatao

GENERAL TOLERANCE

.X: =±0.30 .X': =±2°
.XX: =±0.25 .XX': =±1°
.XXX: =±0.15 .XXX': =±0.5°

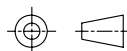
CHECKED:
Tony

UNIT: MM

PROJECTION:

APPROVAL:
Yang jie

SCALE: N/A



SHEET: 1/1



CHIN-BAN
electronics (H.K.) co., ltd

DESCRIPTION:
2.00mm Pitch Wafer Side Entry Type

PART NO: WB2011UR-XXT5

REV: 1.0

CUSTOMER NO:

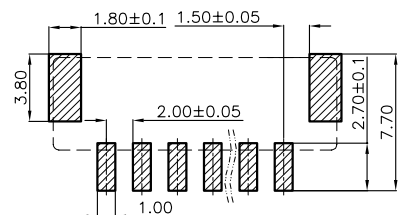
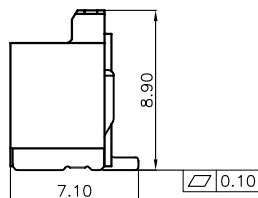
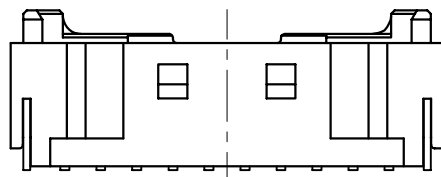
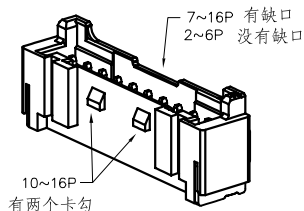
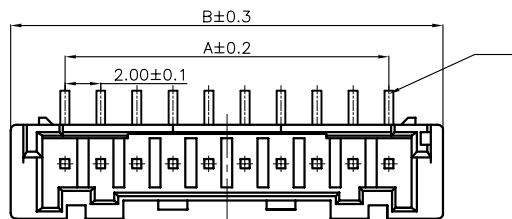
SIZE: A4

G
D
C
B
A
H

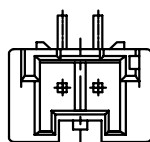
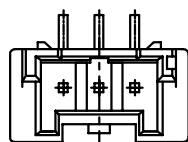
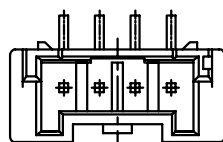
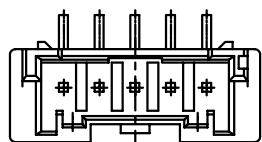
G
G
H
H

1 2 3 4 5 6 7 8

ROHS G103



RECOMMENDED PCB LAYOUT
(TOLERANCE:±0.10)



5~9P

4P

3P

2P

1.ELECTRICAL SPECIFICATIONS:

- 1.1 Rated current and voltage(额定电流):
2.0A 100V AC(r.m.s)
- 1.2 Dielectric Withstanding Voltage(耐电压) :
800V AC for one minute
- 1.3 Contact Resistance(接触电阻) :
20mΩ max
- 1.4 Insulation Resistance(绝缘电阻) :
1000MΩ min
- 1.5 Operating Temperature(工作温度) :
-25°C ~ 85°C

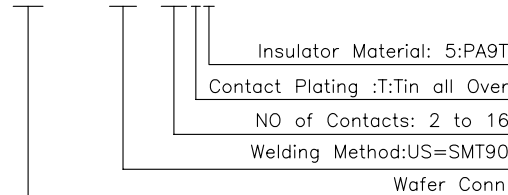
2.MATERIAL SPECIFICATION:

- 2.1 Insulator Material(绝缘体材质):
PA9T,UL94V-0 (natural)
- 2.2 Contact Material(端子材质):
Brass,Tin plated
- 2.3 Solder Tab Material(焊片脚材质):
Brass,Tin plated
- 2.4 Applicable wire:28AWG TO 22AWG

▲ Non-tooled parts
No.of positions DIM list:

CONTACTS	DIMENSIONS	
	A	B
2	2.00	8.00
3	4.00	10.00
4	6.00	12.00
5	8.00	14.00
6	10.00	16.00
7	12.00	18.00
8	14.00	20.00
9	16.00	22.00
▲ 10	18.00	24.00
▲ 11	20.00	26.00
▲ 12	22.00	28.00
▲ 13	24.00	30.00
▲ 14	26.00	32.00
▲ 15	28.00	34.00
▲ 16	30.00	36.00

WB2011US-XXT5



DRAWING:
Hu yatao

GENERAL TOLERANCE

.X: =±0.30 .X*: =±2°
.XX: =±0.25 .XX*: =±1°
.XXX: =±0.15 .XXX*: =±0.5°

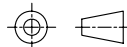
CHECKED:
Tony

UNIT: MM

PROJECTION:

APPROVAL:
Yang jie

SCALE: N/A



SHEET: 1/1



CHIN-BAN
electronics (H.K.) co., ltd

DESCRIPTION:
2.00mm Pitch Wafer TOP Entry Type

PART NO: WB2011US-XXT5

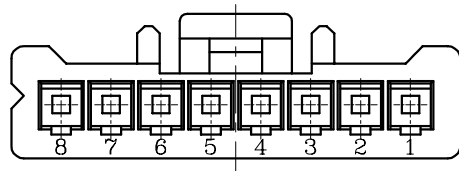
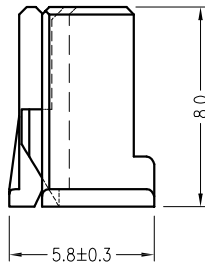
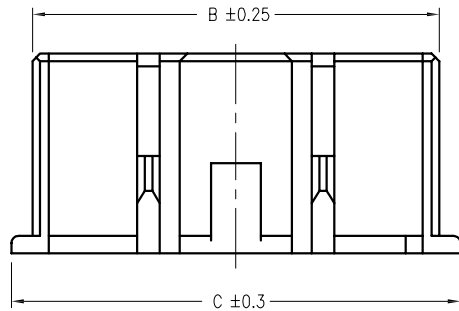
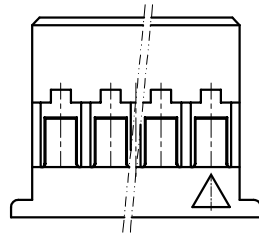
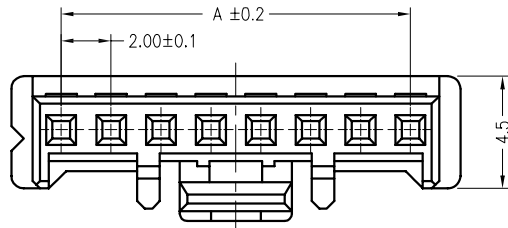
REV: 1.0

CUSTOMER NO:

SIZE: A4

E			
D			
C			
B			
A			
NO.	DATE	DESCRIPTION	APPROVAL

ROHS G103



1.ELECTRICAL SPECIFICATIONS:

- 1.1 Rated current and voltage(额定电流):
3.0A 250V AC(r.m.s)
- 1.2 Dielectric Withstanding Voltage(耐电压) :
800V AC for one minute
- 1.3 Contact Resistance(接触电阻) :
20mΩ max
- 1.4 Insulation Resistance(绝缘电阻) :
1000MΩ min
- 1.5 Operating Temperature(工作温度) :
-25°C ~ 85°C

2.MATERIAL SPECIFICATION:

- 2.1 Insulator Material(绝缘体材质):
PA66,UL94V-0(nature)
- 2.2 Applicable wire:28AWG-22AWG

▲ Non-tooled parts
No.of positions DIM list:

CONTACTS	DIMENSIONS		
	A	B	C
2	2.00	4.30	6.00
3	4.00	6.30	8.00
4	6.00	8.30	10.00
5	8.00	10.30	12.00
6	10.00	12.30	14.00
7	12.00	14.30	16.00
8	14.00	16.30	18.00
9	16.00	18.30	20.00
▲ 10	18.00	20.30	22.00
▲ 11	20.00	22.30	24.00
▲ 12	22.00	24.30	26.00
▲ 13	24.00	26.30	28.00
▲ 14	26.00	28.30	30.00
▲ 15	28.00	30.30	32.00
▲ 16	30.00	32.30	34.00

PART NO. LEGEND:
WB2011URH-XXP2

Insulator Material: 2:PA66

NO of Contacts: 2 to 16

H:Housing

Wafer Conn

DRAWING:
Hu yatao

GENERAL TOLERANCE
.X:±0.30 .X':±2"
.XX:±0.25 .XX':±1"
.XXX:±0.15 .XXX':±0.5"

CHECKED:
Tony

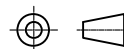
UNIT: MM

PROJECTION:

APPROVAL:
Yang jie

SCALE: N/A

SHEET: 1/1



CHIN-BAN
electronics (H.K.) co., ltd

DESCRIPTION:
2.00mm Pitch Housing Single Row

PART NO: WB2011URH-XXP2

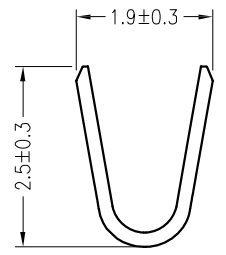
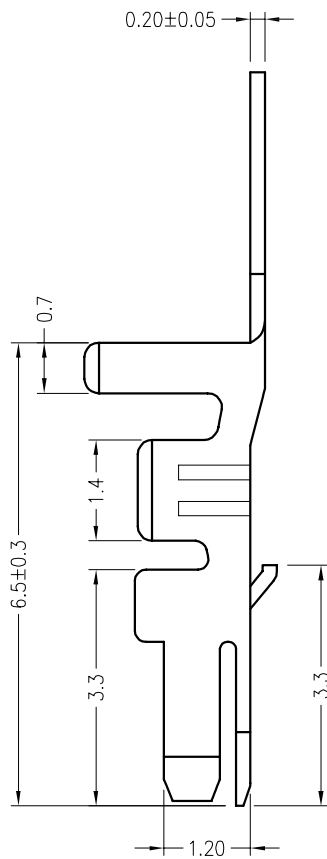
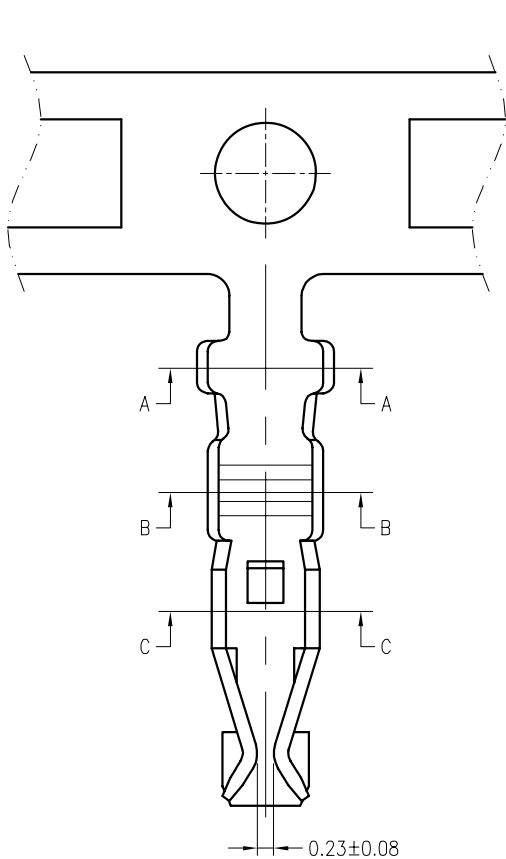
REV: 1.0

CUSTOMER NO:

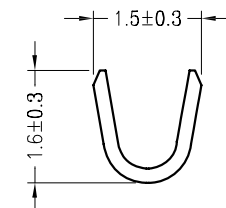
SIZE: A4

E			
D			
C			
B			
A			
NO.	DATE	DESCRIPTION	APPROVAL

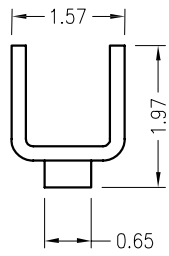
ROHS G103



A-A



B-B



C-C

1.ELECTRICAL SPECIFICATIONS:

- 1.1 Rated current and voltage(额定电流):
3.0A 250V AC(r.m.s)
- 1.2 Dielectric Withstanding Voltage(耐电压) :
800V AC for one minute
- 1.3 Contact Resistance(接触电阻) :
20mΩ max
- 1.4 Insulation Resistance(绝缘电阻) :
1000MΩ min
- 1.5 Operating Temperature(工作温度) :
-25°C ~ 85°C
- 1.6 Material:
Phosphor Bronze (UL94V-0); Tin
- 1.7 Applicable wire:28AWG TO 22AWG

PART NO. LEGEND:

WB2011DST-T2

Material: 2:Phosphor Bronze

Contact Plating :T:Tin all Over

T: Terminal

Wafer Conn

E				DRAWING: Hu yatao
D				
C				CHECKED: Tony
B				
A				APPROVAL: Yang jie
NO.	DATE	DESCRIPTION	APPROVAL	

GENERAL TOLERANCE	
.X:±0.30	.X':±2°
.XX:±0.25	.XX':±1°
.XXX:±0.15	.XXX':±0.5°
UNIT: MM	PROJECTION:
SCALE: N/A	
SHEET: 1/1	



CHIN-BAN
electronics (H.K.) co., ltd

DESCRIPTION: 2.00mm Pitch Terminal	
PART NO: WB2011DST-T2	REV: 1.0
CUSTOMER NO:	SIZE: A4