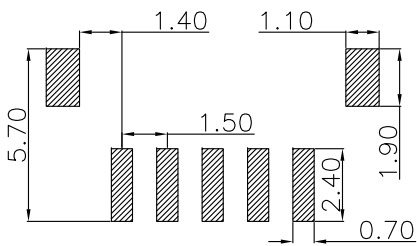
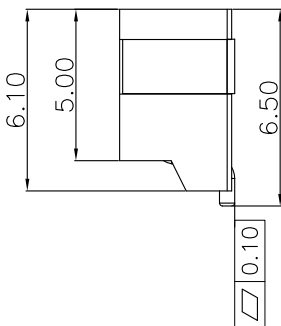
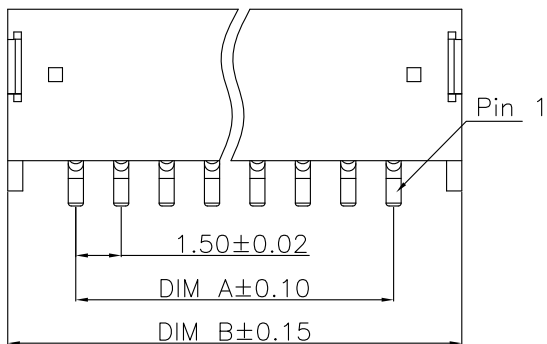
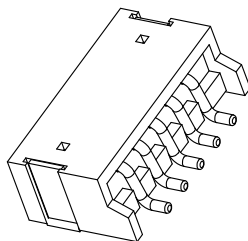
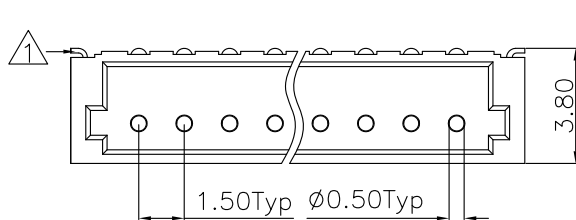


ROHS G103



RECOMMENDED PCB LAYOUT
(TOLERANCE: ±0.05)

1.ELECTRICAL SPECIFICATIONS:

- 1.1 Rated current and voltage(额定电流):
1.0A 50V AC(r.m.s)
- 1.2 Dielectric Withstanding Voltage(耐电压) :
500V AC for one minute
- 1.3 Contact Resistance(接触电阻) :
20mΩ max
- 1.4 Insulation Resistance(绝缘电阻) :
500MΩ min
- 1.5 Operating Temperature(工作温度) :
-25℃ ~ 85℃

2.MATERIAL SPECIFICATION:

- 2.1 Insulator Material(绝缘体材质):
High Temperature Plastic,UL94V-0(nature)
- 2.2 Contact Material(端子材质):
Brass
- 2.3 Solder Tab Material(焊片脚材质):
Phosphor Bronze
- 2.4 Applicable wire:32AWG TO 26AWG

▲ Non-tooled parts
No.of positions DIM list:

CONTACTS	DIMENSIONS	
	A	B
2	1.50	6.00
3	3.00	7.50
4	4.50	9.00
5	6.00	10.50
6	7.50	12.00
7	9.00	13.50
8	10.50	15.00
9	12.00	16.50
10	13.50	18.00
11	15.00	19.50
12	16.50	21.00
13	18.00	22.50
14	19.50	24.00
15	21.00	25.50
16	22.50	27.00

PART NO. LEGEND:

WB1501UR-XXT5

- Insulator Material: 5:PA9T
- Contact Plating :T:Tin all Over
- NO of Contacts: 2 to 16
- Welding Method:UR=SMT180°
- Wafer Conn

DRAWING:
Hu yatao

GENERAL TOLERANCE

.X:=±0.30 .X':=±2°
.XX:=±0.20 .XX':=±1°
.XXX:=±0.10 .XXX':=±0.5°



CHIN-BAN
electronics (H.K.) co., ltd

CHECKED:
Tony

UNIT: MM

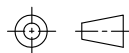
PROJECTION:

DESCRIPTION:

1.50mm Pitch Side Entry Type

APPROVAL:
Yang jie

SCALE: N/A



PART NO: WB1501UR-XXT5

REV: 2.0

SHEET: 1/1

CUSTOMER NO:

SIZE: A4

变更焊片处塑胶结构

DESCRIPTION

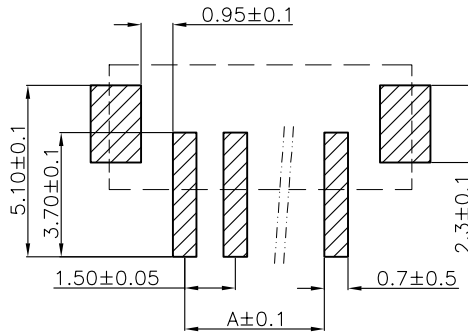
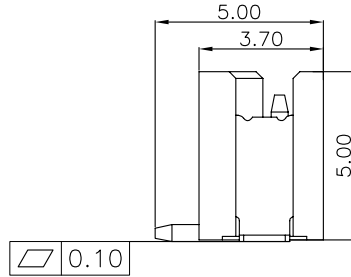
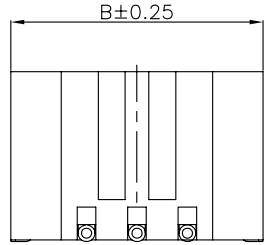
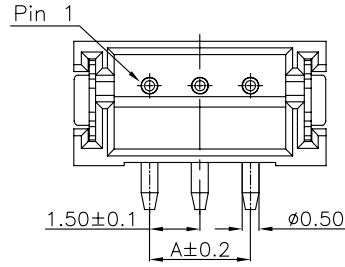
APPROVAL

YANG JIE

CUSTOMER NO:

SIZE: A4

ROHS G103



RECOMMENDED PCB LAYOUT
(TOLERANCE:±0.10)

1.ELECTRICAL SPECIFICATIONS:

- 1.1 Rated current and voltage(额定电流):
1.0A 50V AC(r.m.s)
- 1.2 Dielectric Withstanding Voltage(耐电压) :
500V AC for one minute
- 1.3 Contact Resistance(接触电阻) :
20mΩ max
- 1.4 Insulation Resistance(绝缘电阻) :
500MΩ min
- 1.5 Operating Temperature(工作温度) :
-25°C ~ 85°C

2.MATERIAL SPECIFICATION:

- 2.1 Insulator Material(绝缘体材质):
High Temperature Plastic,UL94V-0(nature)
- 2.2 Contact Material(端子材质):
Brass
- 2.3 Solder Tab Material(焊片脚材质):
Brass
- 2.4 Applicable wire:32AWG TO 26AWG

▲ Non-tooled parts
No.of positions DIM list:

CONTACTS	DIMENSIONS	
	A	B
2	1.50	6.00
3	3.00	7.50
4	4.50	9.00
5	6.00	10.50
6	7.50	12.00
7	9.00	13.50
8	10.50	15.00
9	12.00	16.50
10	13.50	18.00
11	15.00	19.50
12	16.50	21.00
▲ 13	18.00	22.50
▲ 14	19.50	24.00
▲ 15	21.00	25.50
▲ 16	22.50	27.00

PART NO. LEGEND:
WB1501US-XXT5

Insulator Material: 5:PA9T
Contact Plating :T:Tin all Over
NO of Contacts: 2 to 16
Welding Method:US=SMT90°
Wafer Conn

DRAWING:
Hu yatao

GENERAL TOLERANCE

.X:=±0.30 .X':=±2°
.XX:=±0.25 .XX':=±1°
.XXX:=±0.15 .XXX':=±0.5°

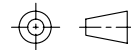
CHECKED:
Tony

UNIT: MM

PROJECTION:

APPROVAL:
Yang jie

SCALE: N/A



SHEET: 1/1



CHIN-BAN
electronics (H.K.) co., ltd

DESCRIPTION:

1.50mm Pitch TOP Entry Type

PART NO: WB1501US-XXT5

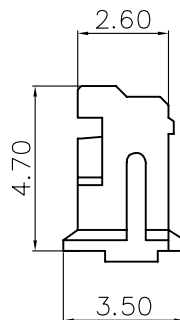
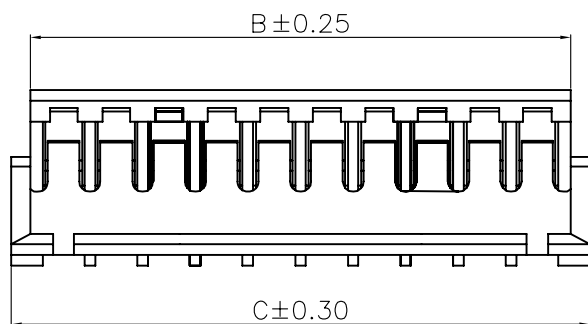
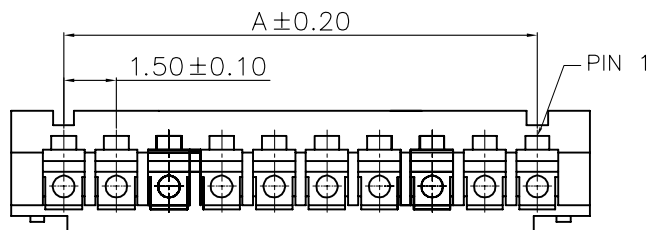
REV: 1.0

CUSTOMER NO:

SIZE: A4

E				DRAWING: Hu yatao	GENERAL TOLERANCE .X:=±0.30 .X':=±2° .XX:=±0.25 .XX':=±1° .XXX:=±0.15 .XXX':=±0.5°	<p>CHIN-BAN electronics (H.K.) co., ltd</p>
D				CHECKED: Tony	UNIT: MM PROJECTION:	
C				APPROVAL: Yang jie	SCALE: N/A	DESCRIPTION: 1.50mm Pitch TOP Entry Type
B					SHEET: 1/1	PART NO: WB1501US-XXT5 REV: 1.0
A						CUSTOMER NO: SIZE: A4
NO.	DATE	DESCRIPTION	APPROVAL			

ROHS G103



1.ELECTRICAL SPECIFICATIONS:

- 1.1 Rated current and voltage(额定电流):
1.0A 50V AC(r.m.s)
- 1.2 Dielectric Withstanding Voltage(耐电压) :
500V AC for one minute
- 1.3 Contact Resistance(接触电阻) :
20mΩ max
- 1.4 Insulation Resistance(绝缘电阻) :
500MΩ min
- 1.5 Operating Temperature(工作温度) :
-25℃ ~ 85℃

2.MATERIAL SPECIFICATION:

- 2.1 Insulator Material(绝缘体材质):
PA66,UL94V-0(nature)
- 2.2 Applicable wire:32AWG TO 26AWG

▲ Non-tooled parts
No.of positions DIM list:

CONTACTS	DIMENSIONS		
	A	B	C
2	1.50	3.40	4.50
3	3.00	4.90	6.00
4	4.50	6.40	7.50
5	6.00	7.90	9.00
6	7.50	9.40	10.50
7	9.00	10.90	12.00
8	10.50	12.40	13.50
9	12.00	13.90	15.00
10	13.50	15.40	16.50
11	15.00	16.90	18.00
12	16.50	18.40	19.50
▲ 13	18.00	19.90	21.00
▲ 14	19.50	21.40	22.50
▲ 15	21.00	22.90	24.00
▲ 16	22.50	24.40	25.50

PART NO. LEGEND:
WB1501USH-XXP2

Insulator Material: 2:PA66
NO of Contacts: 2 to 16
H:Housing
Wafer Conn

DRAWING:
Hu yatao

GENERAL TOLERANCE

.X:=±0.30 .X':=±2°
.XX:=±0.20 .XX':=±1°
.XXX:=±0.10 .XXX':=±0.5°

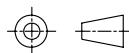
CHECKED:
Tony

UNIT: MM

PROJECTION:

APPROVAL:
Yang jie

SCALE: N/A



SHEET: 1/1



CHIN-BAN
electronics (H.K.) co., ltd

DESCRIPTION:

1.50mm PITCH HOUSING

PART NO: WB1501USH-XXP2

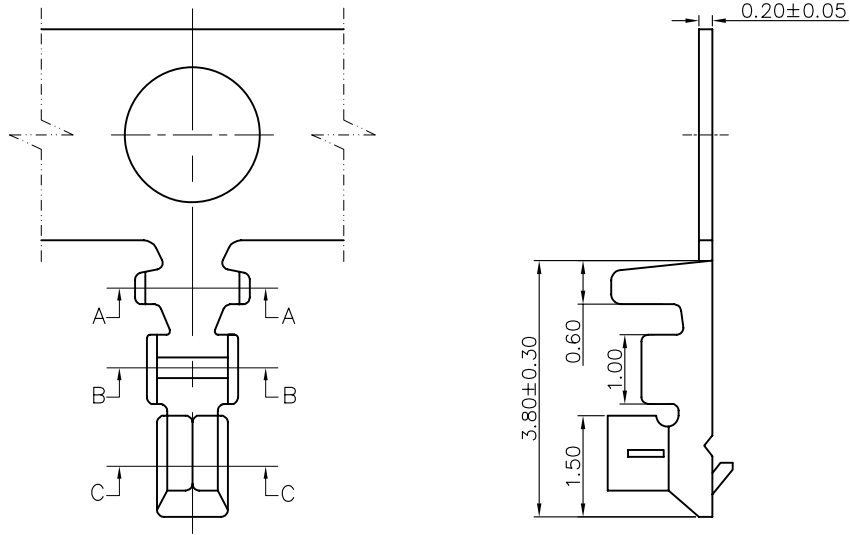
REV: 1.0

CUSTOMER NO:

SIZE: A4

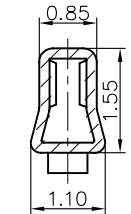
E			
D			
C			
B			
A			
NO.	DATE	DESCRIPTION	APPROVAL

ROHS G103

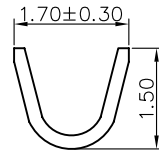


1.ELECTRICAL SPECIFICATIONS:

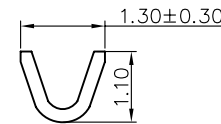
- 1.1 Rated current and voltage(额定电流):
1.0A 50V AC(r.m.s)
- 1.2 Dielectric Withstanding Voltage(耐电压) :
500V AC for one minute
- 1.3 Contact Resistance(接触电阻) :
20mΩ max
- 1.4 Insulation Resistance(绝缘电阻) :
500MΩ min
- 1.5 Operating Temperature(工作温度) :
-25°C ~ 85°C
- 1.6 Material:
Phosphor Bronze (UL94V-0); Tin
- 1.7 Applicable wire:32AWG TO 26AWG



SECTION C-C
SCALE 1 1

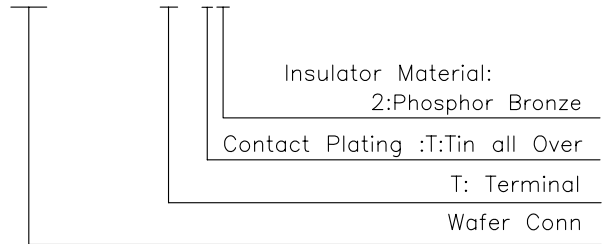


SECTION A-A
SCALE 1 1



SECTION B-B
SCALE 1 1

PART NO. LEGEND:
WB1501UST-T2



E				DRAWING:	GENERAL TOLERANCE			
D				Hu yatao	.X:±0.30	.X':±2°		
C				CHECKED:	.XX:±0.20	.XX':±1°		
B				Tony	.XXX:±0.10	.XXX':±0.5°		
A				APPROVAL:	UNIT: MM	PROJECTION:	DESCRIPTION:	
NO.	DATE	DESCRIPTION	APPROVAL	Yang jie	SCALE: N/A		1.50mm Pitch Terminal	
					SHEET: 1/1		PART NO: WB1501UST-T2	REV: 1.0
							CUSTOMER NO:	SIZE: A4