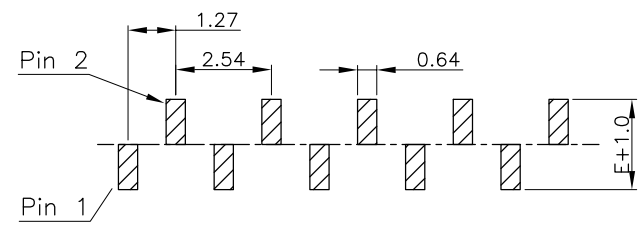
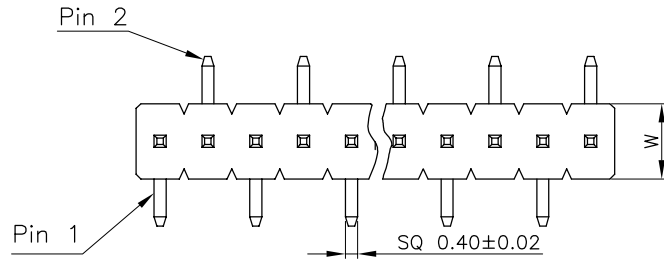
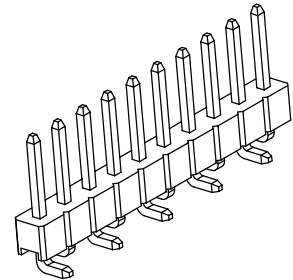
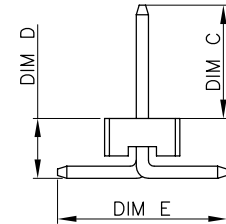
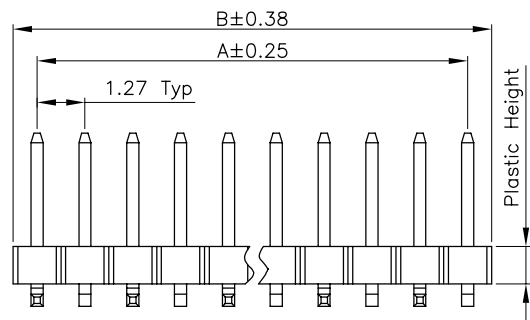


ROHS



RECOMMENDED PCB LAYOUT
(TOLERANCE:±0.10)



▲ Non-tooled parts
NO.of positions DIM list:

CONTACTS	DIMENSIONS	
	A	B
1	/	1.27
2	1.27	2.54
3	2.54	3.81
4	3.81	5.08
5	5.08	6.35
6	6.35	7.62
7	7.62	8.89
8	8.89	10.16
9	10.16	11.43
10	11.43	12.70
11	12.70	13.97
12	13.97	15.24
13	15.24	16.51
14	16.51	17.78
15	17.78	19.05
16	19.05	20.32
17	20.32	21.59
18	21.59	22.86
19	22.86	24.13
20	24.13	24.40
21	24.40	26.67
22	26.67	27.94
23	27.94	29.21
24	29.21	30.48
25	30.48	31.75
26	31.75	33.02
27	33.02	34.29
28	34.29	35.56
29	35.56	36.83
30	36.83	38.10
31	38.10	39.37
32	39.37	40.64
33	40.64	41.91
34	41.91	43.18
35	43.18	44.45
36	44.45	45.72
37	45.72	46.99
38	46.99	48.26
39	48.26	49.53
40	49.53	50.80

Note:

1. Material:
 - 1.1 Housing: PA6T .UL94V-0;
Color: Black
 - 1.2 Contact Material: Brass
2. Electrical specifications
 - 2.1 Rated current and voltage
1A 125V AC(r.m.s)
 - 2.2 Dielectric Withstanding Voltage
500V AC for one minute
 - 2.3 Contact Resistance
20mΩ Max
 - 2.4 Insulation Resistance
1000MΩ Min
 - 2.5 Operation Temperature
-40°C ~ +105°C

Pin Header
Pitch: 3=1.27mm
Plastic Height*Width:
D=2.00*2.50mm
E=2.50*2.50mm
NO of Contacts:
1 to 40
Series No: B (Right footprint)

Packing Options:
Y=Reel With Cap
C=tube Z=Tube With Cap
Contact Plating : 1: G/F
Insulator Material: B:PA6T

*****: C\D\E LENGTH
(O)(D)(E)

P 3 X XX B - XXXXXX - B X X

E			
D			
C			
B			
A			
NO.	DATE	DESCRIPTION	APPROVAL

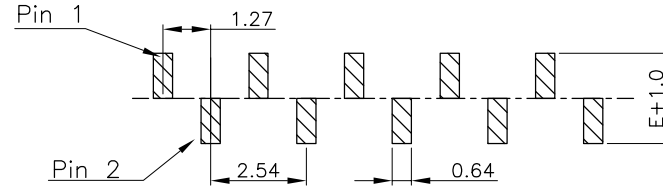
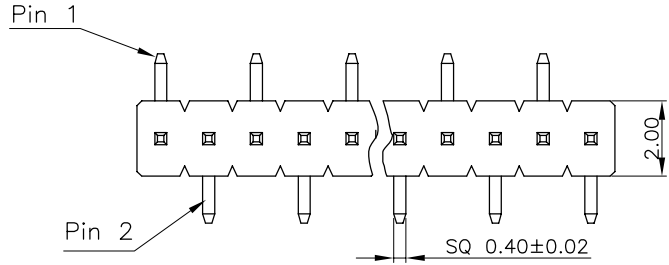
DRAWING: Hu yatao	GENERAL TOLERANCE .X:±0.30 .X':=±2" .XX:±0.20 .XX':=±1" .XXX:±0.10 .XXX':=±0.5"	
CHECKED: Tony	UNIT: MM	PROJECTION:
APPROVAL: Yang jie	SCALE: N/A	
	SHEET: 1/2	



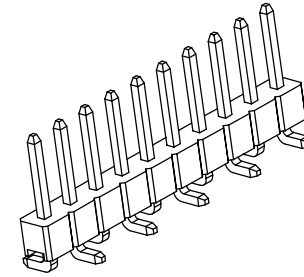
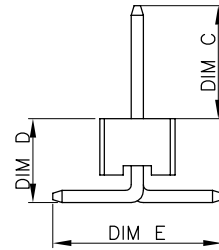
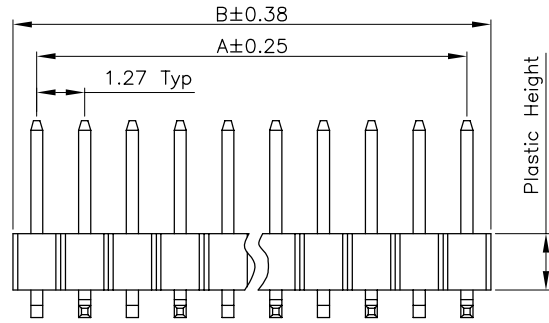
CHIN-BAN
electronics (H.K.) co., ltd

DESCRIPTION: 1.27mm Pitch Pin Header Single Row SMT	
PART NO: P3XXXB-XXXXXX-BXX	REV: 1.0
CUSTOMER NO:	SIZE: A4

ROHS



RECOMMENDED PCB LAYOUT
(TOLERANCE:±0.10)



▲Non-tooled parts
NO.of positions DIM list:

CONTACTS	DIMENSIONS	
	A	B
1	/	1.27
2	1.27	2.54
3	2.54	3.81
4	3.81	5.08
5	5.08	6.35
6	6.35	7.62
7	7.62	8.89
8	8.89	10.16
9	10.16	11.43
10	11.43	12.70
11	12.70	13.97
12	13.97	15.24
13	15.24	16.51
14	16.51	17.78
15	17.78	19.05
16	19.05	20.32
17	20.32	21.59
18	21.59	22.86
19	22.86	24.13
20	24.13	25.40
21	25.40	26.67
22	26.67	27.94
23	27.94	29.21
24	29.21	30.48
25	30.48	31.75
26	31.75	33.02
27	33.02	34.29
28	34.29	35.56
29	35.56	36.83
30	36.83	38.10
31	38.10	39.37
32	39.37	40.64
33	40.64	41.91
34	41.91	43.18
35	43.18	44.45
36	44.45	45.72
37	45.72	46.99
38	46.99	48.26
39	48.26	49.53
40	49.53	50.80
41	50.80	52.07
42	52.07	53.34

Note:

1. Material:
 - 1.1 Housing: PA6T .UL94V-0;
Color: Black
 - 1.2 Contact Material: Brass
2. Electrical specifications
 - 2.1 Rated current and voltage
1A 125V AC(r.m.s)
 - 2.2 Dielectric Withstanding Voltage
500V AC for one minute
 - 2.3 Contact Resistance
20mΩ Max
 - 2.4 Insulation Resistance
1000MΩ Min
 - 2.5 Operation Temperature
-40°C ~ +105°C

Pin Header
Pitch: 3=1.27mm
Plastic Height*Width:
D=2.00*2.50mm
E=2.50*2.50mm
NO of Contacts:
1 to 40
Series No: X (Left footprint)

Packing Options:
Y=Reel With Cap
C=tube Z=Tube With Cap
Contact Plating : 1: G/F
Insulator Material: B:PA6T

***** C\D\E LENGTH
(C)(D)(E)

E				DRAWING: Hu yatao
D				
C				CHECKED: Tony
B				APPROVAL: Yang jie
A				
NO.	DATE	DESCRIPTION	APPROVAL	

GENERAL TOLERANCE	
.X:±0.30	.X':±2°
.XX:±0.20	.XX':±1°
.XXX:±0.10	.XXX':±0.5°
UNIT: MM	PROJECTION:
SCALE: N/A	
SHEET: 1/2	



CHIN-BAN
electronics (H.K.) co., ltd

DESCRIPTION: 1.27mm Pitch Pin Header Single Row SMT	
PART NO: P3XXXX-XXXXXX-BXX	REV: 1.0
CUSTOMER NO:	SIZE: A4